

Bell 206 Models

“Helitech is pleased to offer our first product for the Bell 206 series helicopters!”

Bell 206L Models

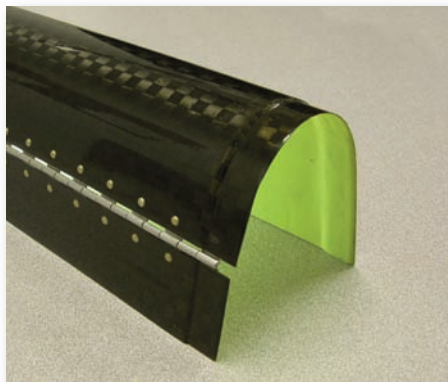
# Bell 206 T/R Drive Shaft Covers Carbon Fiber



## BELL MODELS

206A, 206B, 206L, 206L-1, 206L-2, 206L-3

Helitech Corporation is pleased to offer a new and improved Carbon Fiber driveshaft cover for the Bell 206 Jet Ranger Series Helicopter. These covers are made to exacting specifications utilizing state of the art composite technology and cured in a pressurized autoclave for a compressed and uniform finish. The extruded hinge assembly is robust and is bonded and fastened with Monel rivets for maximum tolerance to wear and tear and corrosive environments. All Covers are Transport Canada and FAA Approved.



Hinges on the Drive Shaft Cover allow for easier maintenance.

## DURABLE & IMPACT RESISTANT

The Carbon Fiber driveshaft cover has been designed to replace the original cover with added benefits. The Carbon Fiber material improves the construction to provide an impact resistant cover without an added weight penalty. The cover is made in two parts to allow for easier storage, handling, shipping, and maintenance. The hinge allows for easy maintenance of the driveshaft without removing the entire driveshaft cover from the tailboom.



**Canada**  
Helitech Support Services LLP.  
1640 Threshold Drive, Abbotsford, BC V2T 6H5  
Tel: 604-557-9690, Fax: 604-557-9691

**United States**  
Helitech Corporation  
7056 Portal Way, Building K2, Ferndale, Washington 98248  
Tel: 360-366-0129, Fax: 360-366-5037

*"The carbon fiber material and the hinged construction have proven to be a real asset to our operation"*

Ken Bennett  
Operations Manager  
Heliworks, Inc.

Non-Hinged models  
also available!

Hinged model improves preflight  
inspections and maintenance!



## Why Helitech Carbon Fiber Drive Shaft Covers?

- **Light weight** construction that is **corrosion & impact resistant**.
- **Prevents wear** to tailboom skin as it can be trimmed to allow clearance between cover and tailboom.
- Designed in two halves for **improved maintenance**, shipping, storage, and handling.
- Hinged model **improves** maintenance and inspection while **decreasing** chance of damage. No need to remove entire cover with hinged model.
- Each STC kit comes complete with everything you need for **easy installation** and comes primed and ready for painting.

Covers come pre-trimmed to fit all B206 series aircraft to minimize installation time. The kits are fully complete with installation instructions and hardware to aid in fit and placement throughout the length of the tailboom.

All covers come pre-primed inside and out, top coat ready to customer requirements.

For more detailed information, options, or pricing please contact the following individuals:

USA - Greg Bartlett  
gregb@helitechss.com  
Tel: 360-366-0129

Canada - Mike Clark  
mikec@helitechss.com  
Tel: 604-557-9690



Canada  
Helitech Support Services LLC.  
1640 Threshold Drive, Abbotsford, BC V2T 6H5  
Tel: 604-557-9690, Fax: 604-557-9691

United States  
Helitech Corporation  
7056 Portal Way, Building K2, Ferndale, Washington 98248  
Tel: 360-366-0129, Fax: 360-366-5037